

INDEX

NOTE.—Where there is more than one reference to a subject, the chief reference is given in bold numerals. Where there are two important references to a subject, both appear in bold print.

	<i>Page</i>		<i>Page</i>
A		Banks, Private	695
Aboriginal Affairs, Ministry of ..	633	Total Deposits in	695-696
Aboriginals in Victoria	144-145	Trading	683-685
Accident Insurance Office, State ..	705	Barley	336-337
Accidental Deaths	168-169	Basic Wage	179-184
Accidents, Industrial	205-210	Benefits, Hospital and Nursing Home ..	558-559
Road Traffic	786-788	Medical	559-560
Transport	169	National Health	558-563
Acts, State, Passed during 1967 ..	86-91	Pharmaceutical	560
Adoption of Children	158	Unemployment and Sickness ..	556-557
Aerial Agriculture	323-324, 793	Bills of Sale	716
Work Operations	789-790	Births	154-158
Aerodromes	789	Books about Victoria	847-848
Age Pensions	553	Books Published, Select Bibliography ..	849-853
Agricultural Colleges	311-312	Boots and Shoes	438
Education, Research, and ..	311-315	Boundaries and Area of Victoria ..	27
Extension Services	311-315	Breeding, Stock	353
Machinery and Implements	431	Bridges and Roads	232, 271
Agriculture, Aerial	323-324, 793	Broadcasting	466-468
Victorian Department of	312-313	Commercial	467
Airport, Essendon	794	Broiler Industry	364-365
Tullamarine	791-792	Building Approvals	621-622
Alienation of Land	294-295	Control	234
Ambulance Services	536	Development in City of Mel- bourne	616-618
Annual Leave	196	Grants, Infant Welfare	529
Anti-Cancer Council	547-548	and Housing	616-638
Applied Science, Institute of ..	464-465	Societies	706
Apprenticeship Commission	197-199	Statistics	619-626
Arbitration, Industrial	175-179	Supervision and Control of	618
Area and Boundaries of Victoria ..	27	Buildings, New	622-626
Arrivals from and Departures ..	142-143	Bursaries and Scholarships	484-486
Overseas	142-143	Bush Nursing Association, Victorian ..	540-541
Articles in Previous Victorian Year ..	844-846	Butter and Cheese	440
Books	844-846	C	
Artificial Fertilizers	322-323	Cabinet	71-72
Arts Centre	460-461	Cancer Institute Board	544-547
Assurance Fund	713	Services in Operation	546-547
Asthma Foundation of Victoria ..	550	Canning of Foods	432-435, 439
Australian Broadcasting Commission ..	466-467	Care of the Elderly	582-584
Broadcasting Control Board ..	466, 469	Cargoes Discharged and Shipped ..	751-753
National Accounts	834-841	Catchments, Water	41
Post Office (<i>see</i> Postmaster- General's Department)	331-332	Catholic Education	495
Wheat Board	331-332	Census of 1966	119-130
Aviation, Civil	788-794	Populations 1933 to 1966 ..	112-119
B		of Retail Establishments	727-733
Baby Health Centres (<i>see</i> Infant ..	439	Charitable Institutions	536-539
Welfare)	439	Charter Operations, Aerial	790
Bakeries	439	Chief Justice	74
Ballarat Sewerage Authority	277-278	Child Endowment	555-556
Water Commissioners	277	Citizenship and Naturalisation ..	143-144
Banking during 1967	681-683	Civil Aviation	788-794
Legislation, Commonwealth	681	Climate of Melbourne	62-66, 68
Bankruptcies	600	of Victoria	47-62

	<i>Page</i>		<i>Page</i>
Clothing	437	Deaths	159
Coal Mine Workers Pension Fund..	670	Accidental	168-169
Production	383	Causes of	159-173
Colleges, Agricultural	311-312	Debt, Public	674-680
Commercial Broadcasting	467	Sinking Fund, National	679-680
Television	470-471	Decentralisation of Manufacturing	
Commonwealth Banking Corpor-		Industries	394-395
ation	687-691	Department of Agriculture, Victoria	
Banking Legislation	681	of Education	312-313
Conciliation and Arbitration		of Health	107-110
Commission	178-179	of Housing	518-529
Development Bank 302-303, 689-691		of Labour and Industry	626
Employment Service	212-214	and National Service	175
Grants	645-649	of Local Government	212
Industrial Court	178-179	Postmaster-General's	227-230
Savings Bank	688-689, 690	of Trade and Industry, Common-	794-803
Scholarship Schemes	485-486	wealth	395-396
Scientific and Industrial Re-		Departments, History of State	
search Organisation	396	Government	107
Social Services	551-558	State	101
and State Taxation Law	590-594	Departures and Arrivals from	
Trading Bank	688	Overseas	142-143
Communications	794-806	Deposits in Savings Banks	659-696
Companies Registered	716-717	Diabetes Mellitus	166
Company Tax	666	Diseases of Digestive System	168
Compensation, Workers	210-212	Genito-Urinary System	168
Consolidated Revenue Fund	649-651	the Heart	166-167
Constitution of Victoria	69-72	Infective and Parasitic	163
Consumer Price Index	220-222	the Respiratory System	167
Consumption Expenditure, Personal	840	Dispensaries, Friendly Societies	584-586
Containers	442	Disputes, Industrial	199-200
Cool Storage, Fruit	349-350	Districts, Statistical	289-294, 319
Co-operative Housing Societies		Divorce	151-153
Organisations	707-708	Drainage, Stormwater	267
Societies	586-587	Driving Licences	779-780
Coroners, Committals by	607	Drought	53-55, 58
Corporations, Public	101	Duties, Probate	654-655
Correspondence School	477	Stamp	657-658
Council of Adult Education	516-517	Duty, Lottery	659
of Public Education	490	Dwellings, New, Number of	624-625
Councils, Municipal	231		
Country Fire Authority	280-281	E	
Roads Board	257-261	Earnings, Average Weekly	191
Sewerage Authorities	278	and Hours, Survey of Weekly	192-194
County Court	597	Education	475-518
Court, Children's	600-604	Agricultural	311-312
County	597	Catholic	495
Industrial	178-179	Council of Adult	516-517
Licensing	611-612	Council of Public	490
Supreme	595-596	Development of Curricula	479-481
Courts	594-599	State Expenditure on	487-489
of Petty Sessions	598-599, 605-606	System	475-479
Cremation	174	Technical	486-487
Crime Statistics	605-611	Egg Industry	365-366
Crops and Growers	326-328	Elections, Municipal	231-232
Minor	353	Parliamentary	98-99
Principal	328-343	State, Voting Features of	95-96
Crown Lands, Alienation of	295	Electoral System	93-99
Cultivation, Progress of	325	Electors, Number Enrolled	94-95
Customs Regulations	739	Electric Light and Power	444
Revenue	747-748	Electrical Machinery, Cables, and	
		Apparatus	430
D			
Dairying Industry	356-358		

	<i>Page</i>		<i>Page</i>
Electricity Commission, State	446-451	Fire Authority, Country ..	280-281
Generated	451	Brigades Board, Metropolitan	279-280
Employment and Unemployment	212-220	Marine, and General Insurance	699-705
Civilian	216-220	Fires, Forest	371-372
Control of	212-214	Fisheries Statistics	376-377
in Factories	408-412	and Wildlife	374-377
in Industry Groups	218-219	Flats, New, Number of	624-625
Service, Commonwealth	212-214	Floods	43-45, 58-59
Ensilage	340	Fodder Conservation	354-356
Entertainments Tax	661	Food, Drink, and Tobacco	.. 438
Epidemiological Research	549-550	Retail Prices	223
Essendon Airport	794	Foreshores, Melbourne	271
Estate Duty, Commonwealth	.. 655	Forest Fires	371-372
Events, Principal, from 1 July	.. 842-843	Forestry	368-374
1967 to 30 June 1968	842-843	Founding and Casting	432
Examinations Board, Victorian	.. 496-498	Freeways	272-273
Universities and Schools	.. 498	Friendly Societies	584-586
Examinations, Matriculation	.. 747-748	Fruit, Cool Storage	349-350
Excise Revenue	71	Industries	346-351
Executive Council	649-651	Fuel and Power, Ministry of	444-446
Expenditure State	739	Furniture	440-441
Export Controls and Incentives	.. 367-368		
Frozen Meat	225-226	G	
Price Index	742-744	Gallery, National	459-463
Exports		Gaols	568-569
		Gas Industry	452-454
F		Works	451
Factories, Child Labour in ..	412	Geelong Harbor Trust	757-759
Classification of	398-406	Waterworks and Sewerage Trust	275-276
Cost of Materials Used	415	Geographical Features	27-36
Employment in	408-412	Gordon Institute of Technology,	
Government	456	Geelong	512-514
Land, Building, Plant and		Government Administration	101-110
Machinery	420-423	Employees	219
Power, Fuel, and Light Used	413-415	Factories	456
Relation of Costs to Output and		Financial Activity	639-642
Production	417-419	Grants, Municipalities	238-239
Salaries, Wages, and Other Costs		Housing Activities	626-633
.. ..	412-413	Instrumentalities	102-106
and Shops	196-197	Ministries	73-74
Summary of	401	69-70
Value of Output and Production		Governor of Victoria	329-330
.. ..	416-417	Grain Elevators Board	645-649
Factory Development	401	Grants to the States	835
Products, Principal	423-425	Gross National Expenditure	.. 834
Statistics, Definitions in	397-398	Product	384-386
Family Welfare	563-566, 575-576	Groundwater in Victoria ..	
Farm Development Loan Fund	.. 302		
Income	841	H	
Machinery	324	Harbor Trust, Geelong	757-759
Farming	311-368	Melbourne	754-757
Collection of Statistics	317-318	Portland	759-760
Principal Items	318	Hay	339
Federal Parliament, Victorian		Health Benefits, National	558-563
Members of	100-101	Department of	518-529
Fertilizers, Artificial	322-323	Heart, Diseases of	166-167
Finance, Private	681-726	Highways and Roads	257-259
Public	639-680	Hire Purchase Operations ..	726
Rural	297-304	Holdings, Rural, Classification	of
Financial Relations with the Com-		314-317, 320-322
monwealth	642-649		
Transactions, Government	639-642		

	<i>Page</i>		<i>Page</i>
Home Finance Trust	634	Interstate and Overseas Trade	736-748
Savings Grant Scheme	629-630	Invalid Pensions	553-554
Homes, War Service	628	Irrigation and Land Settlement	289-310
Homicide	169		
Honey Industry	368	J	
Hosiery	436	Judiciary	74
Hospital and Nursing Home Benefits		Justice and Administration of Law	588-616
Hospitals and Charities Commission	558-559		
Private	532-535	K	
Public	535	Knitted Goods	436
Regional Planning	534, 536-539		
Hours and Earnings, Survey of		L	
Weekly	192-194	Labour and Industry, Department	
Hours of Work, Average Weekly	195	of	175
Standard	194-195	and National Service, Depart-	
Houses, New	625-626	ment of	212
Housing Activities, Government	626-633	Organisations	200-213
for Aged Persons	636-638	Lakes	45-46
Agreements, Commonwealth-		Lambing	361-362
State	627-628	Land, Alienation of	294-295
and Building	616-638	Settlement and Irrigation	289-310
Commission of Victoria	632-633	Tax	655-657
Department of	626	Transfer of	712-713
Finance Statistics	636	Transfers, Mortgages	714-715
Institutions Approved	634	Utilisation	289-294
Loans	635-636	Utilisation Advisory Council	296-297
Loans Insurance Corporation	630-631	Valuation	229-230, 236-238
Housing Societies, Co-operative	634-635	La Trobe University	507-509
		Latrobe Valley Water and Sewerage	
I		Board	276-277
Immigration	138-144	Law	588-589
Imports	742-744	Administration of, and Justice	588-616
Income, Farm	841	Leave Annual	196
Personal	839-840	Long Service	196
Tax	661-666	Legal Departments and Officers	588-589
Industrial Accidents	205-210	Profession	588
Arbitration	175-179	Legislation, Banking	681
Awards, Incidence of	191-192	Industrial	394
Conditions	175-212	Licensing	611-612
Disputes	199-200	Overseas and Interstate Trade	736-740
Legislation	394	Legislative Assembly	82-85
Safety	203-205	Council	81-82
Industries, Details of	427-456	Letters, Posted and Received	801
Individual	427-456	Library Council of Victoria	457-458
Infant Mortality Statistics	169-173	State	458-459
Welfare, Building Grants	529	Licences, Broadcast and Television	803
Expenditure on	529	Driving	779-780
Services	525-529	Licensing Court	611-612
Inquests	606-607	Legislation	611-612
Insects of Victoria	1-25	Liens on Wool and Crops	715
Instalment Credit for Retail Sales	723-726	Lieutenant-Governor of Victoria	70-71
Institute of Applied Science	464-465	Life Insurance	696-699
of Colleges	509-510	Linseed	341-342
Insurance, Fire, Marine, and General	699-705	Liquor Tax	658-659
Life	696-699	Livestock	353-354
Motor Vehicle	704	Loan Fund, Expenditure from	673-674
Types of Cover	700	Local Authorities Superannuation	
of Workers	210-212	Board	242-243

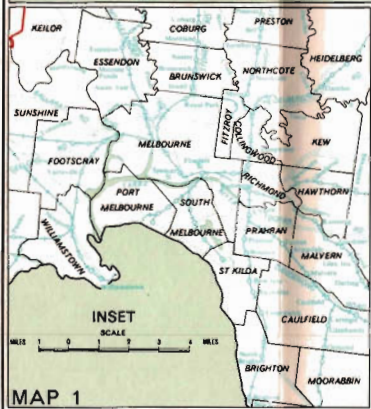
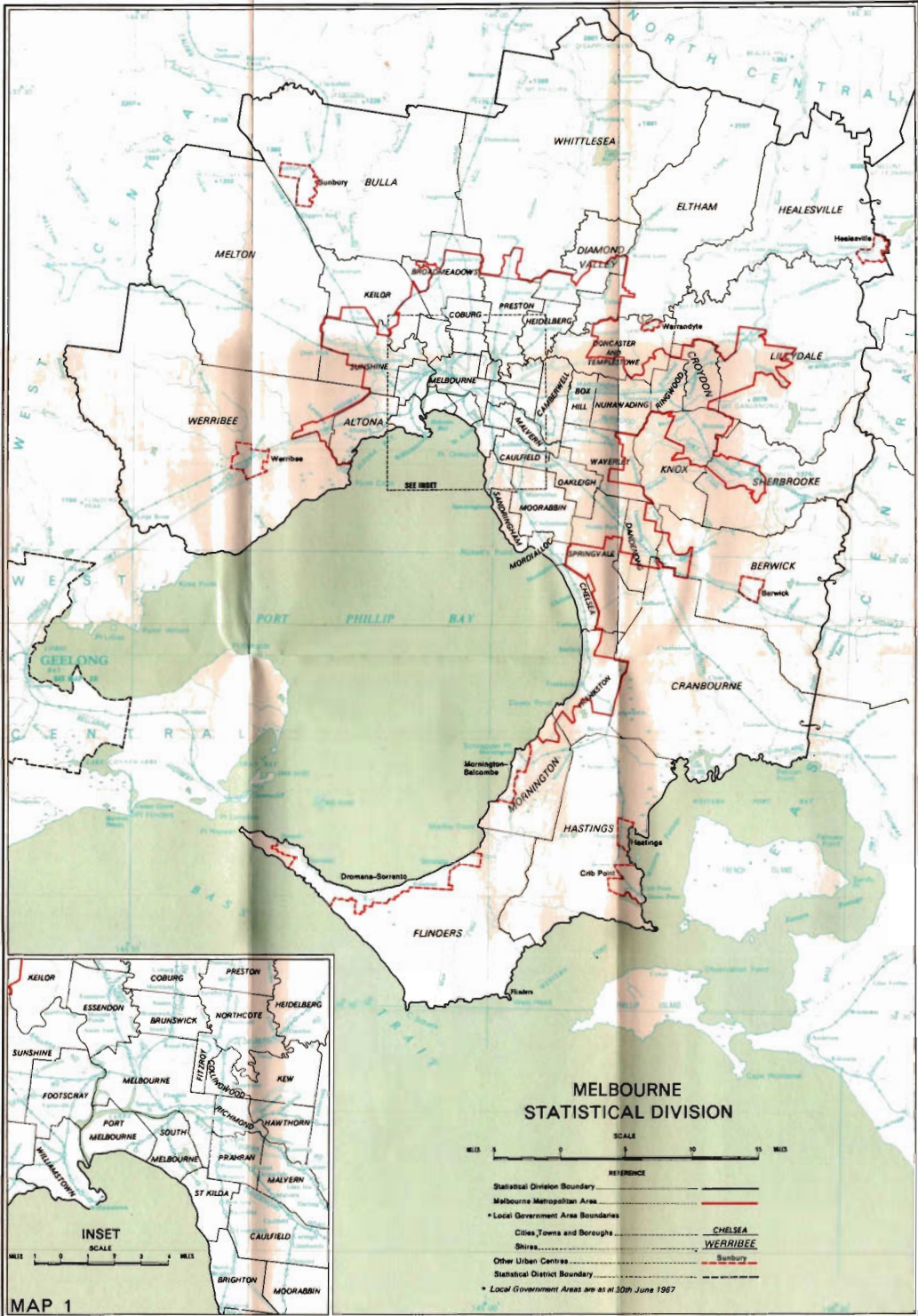
	<i>Page</i>		<i>Page</i>
Local Government Administration		Migration	138-144
Department ..	227-247	Mildura	807-833
Properties Rated, Loans	227-230	Mineral Production ..	383
Outstanding ..	247-248	Mining	378-383
New Money Loan Raisings ..	282	Ministries	73-74
Statistics of ..	247-256	Ministry of Aboriginal Affairs ..	633
Long Service Leave ..	196	of Fuel and Power ..	444-446
Lord Mayor's Children's Camp,		Monash University ..	502-506
Portsea	582	Money Market, Short Term 241,721-723	
Fund	543	Orders and Postal Orders ..	801
Lottery (Tattersall) Duty ..	659	Mortgages of Real Estate ..	714-715
Lower Yarra Crossing Authority ..	786	Stock	715
		Motor Boats	783
		Motor Car Insurance Office, State	
		704-705	
M		Motor Vehicle Insurance ..	704
Machinery, Agricultural	431	Taxation	653-654
Electrical	430	Motor Vehicles	431, 779-782
Farm	324	Drivers' Licences ..	779-780
and Plant, Factories ..	421-422	Registration	779-782
Machines and Conveyances ..	429	Mountain Regions	35-36
Magistrates, Stipendiary ..	598	Mountains, Heights of ..	36
Mail Services	795-797	Municipal Administrative Costs ..	251
Maintenance Subsidies, Pre-School	528	Association of Victoria ..	241-242
Maize	338	Borrowing Powers ..	240-241
Malignant Neoplasms	163-165	Business Undertakings ..	252-253
Manufacturing Activity	393-426	Elections	231-232
Development during 1967 ..	393-394	Loan Finance	253-255
Maps in Previous Victorian Year		Officers	232
Books, List of	846	Revenue and Expenditure ..	248-251
Margins, Wage	187-188	Municipalities	230-243
Marine Animal Ecology of Victoria's		Boundary Changes, 1 July 1966	
Coastline	36-40	to 30 June 1967	138
Marriages	146-150	Constitution of	227-229
Maternal, Infant, and Pre-School		Government Grants ..	238-239
Services	525-529	Powers and Duties of ..	232-236
Maternity Allowances	555	Museum, National	463-464
Matriculation Examination ..	498		
Meat, Frozen, Exported	367-368	N	
Industry	364	National Accounts, Australian ..	834-841
Medical Benefits	559-560	Association of Testing Author-	
Research	549-550	ities	396
Service, School	522-523	Debt Sinking Fund	679-680
Melbourne Building Development in		Gallery of Victoria	459-463
1967	616-618	Museum of Victoria ..	463-464
City Council	243-247	Parks and Gardens	472-475
Climate of	62-63, 66, 68	Television	472
Harbor Trust	754-757	Trust of Australia (Victoria) ..	638
Port and Cargo Facilities ..	755-756	Natural Gas in Victoria ..	378-382
and Metropolitan Board of		Naturalisation and Citizenship ..	143-144
Works	262-273	Newspapers and Periodicals ..	441-442
Farm at Werribee	266	Nursing	535
Revenue and Expenditure ..	269-270, 272		
and Metropolitan Tramways		O	
Board	774-777	Oats	335-336
Sewerage System	265-266	Occupational Status	214-216
Water Supply	263-265	Oil and Natural Gas	378-382
Members of State Parliament ..	81-85	Oils, Mineral	428
Mental Health Authority ..	530-532	Omnibus Services	776-778
Metals, Machines and Conveyances	429	Onions	341
Non-Ferrous	432	Orchards, Fruit Trees in ..	348
Metropolitan Fire Brigades Board	279-280		
Rivers and Streams	267-268		

	<i>Page</i>		<i>Page</i>
Overseas and Interstate Trade	736-748	Potatoes	340-341
Overseas Telecommunications Com- mission	803-806	Poultry Slaughtered	367
P		Power, Fuel, and Light Used in Factories	413-415
Paramedical Services	548-549	Stations, Electric	451
Parklands, Melbourne	272	Pre-Natal Service	527
Parliament, Federal, Victorian		Pre-School Maintenance Subsidies	528
Members of	100-101	Services	527-529
Members of State	81-85	Press, The	465-466
of Victoria	75-92	Price Index, Consumer	220-222
Parliamentary By-Elections	99	Export	225-226
Debates (Hansard)	77-81	Share	720-721
Elections	98-99	Price Indexes, Retail	220-223
Government, Cost of	85-86	Wholesale	224-225
Papers	91-92	Prices	220-226
Procedure	76-77	Primary Industries Other than Farming	368-387
Retirement and Superannuation Funds	670-671	Production, Value of	387-390
Parliaments, Number and Duration of	85	Primary Schools	476, 482-484
Parole, Adult	570-574	Principal Events from 1 July 1967 to 30 June 1968	842-843
Youth	570-574	Printing	442
Passenger and Goods Rail Traffic		Prisons and Prisoners	568-569
	765-766	Private Streets, Construction of 233,	255-256
Pastoral and Dairying	353-368	Probate	710-712
Finance Companies, Advances	303	Duties	654-655
Pensioner Medical Service	561	Probation, Adult	571-572
Pensions, Age	553	Children's Court	572-573
and Gratuities	667-672	Production Statistics, Monthly Value of	426
Invalid	553-554	Properties Rated	247-248
War and Service	577-578	Protection of Industry	396
Widows	554	Public Debt	674-680
Personal Consumption Expenditure Income	840 839-840	Health Engineering	520-521
Petty Sessions, Courts 598-599, 605-606		Solicitor	589
Pharmaceutical Benefits	560	Trustee	708-710
and Toilet Preparations	428	Publications Issued by the Victorian Office, Commonwealth Bureau of Census and Statistics	853-854
Pharmacy, Victorian College of	514-515	Pupils, Enrolments at Registered Schools	492-494
Physical Divisions	28-31	Q	
Environment and Land Use	31-35	Quarrying	386-837
Pig Industry	358-359	R	
Pilots, Port Phillip Sea	753-754	Racing	613
Plant and Machinery, Factories Plastics	421-422 443	Taxation	660-661
Poisons Information Centre	542-543	Radio Communications	799
Police, Pensions and Superannuation Victoria	669-670 613-616	Stations	802
Population	111-145	Railway Gauge Standardisation	766
Estimates	131-138	Railways	762-774
Historical	111	Bogie Exchange	766-767
Populations, Census 1933 to 1966	112-119	Rolling Stock	430, 764, 770
Port of Geelong	746-751	Staff	769
Melbourne	745-751	Traffic	771
Portland	751, 759-760	Rainfall in Districts	49-52
Westernport	751, 761-762	Variability	55-58
Port Phillip Authority	282-284	Rating of Land and Property	236-238
Sea Pilots	753-754	Real Estate, Mortgages of	714-715
Portland Harbor Trust	759-760	Red Cross Society	580-582
Post Office Statistics	800-803	Registered Schools	490-494
Postal Services	794-799		
Postmaster-General's Department	794-803		

	<i>Page</i>		<i>Page</i>
Registrations of Motor Vehicles	779-782	Sheep, Breeds of	360-361
Rehabilitation	557	Industry	360-363
Repatriation	576-580	and Lambs in Statistical Districts	362
Research, Agricultural	312-313	Sheet Metal Working	435
Scientific	396	Sheltered Employment	561-563
Reserve Bank of Australia	301-302, 686-687	Shipping	748-753
Retail Establishments, Census of	727-733	Shoes and Boots	438
Survey of	734	Shops, Closing Hours	196-197
Price Indexes	220-223	and Factories	196-197
Prices of Food	223	Short Term Money Market 241,	721-723
Sales, Instalment Credit for	723-726	Sickness Benefits	556-557
Trade	727-733	Slaughtering of Stock	367
Retailing in Victoria since 1957	735-736	Social Security Benefits	551-553
Revenue and Expenditure, State	649-651	Social Services, Commonwealth	551-558
River Improvements, Melbourne	267	Social Welfare Department	563-576
Rivers	40-43	Family Welfare Division	563-566
and Streams, Metropolitan	267-268	Finance	575
Road Motor Services, Railways	774	Prisons Division	568-569
Traffic Accidents	786-788	Probation and Parole	570-572
Roads and Bridges	232	Division	570-572
and Highways	257-259	Research and Statistics	569-570
and Streets, Length of	257	Training Division	570
Rounding of Figures	Preface	Youth Welfare Division	566-567
Royal District Nursing Service	541-542	Societies, Co-operative	586-587
Melbourne Institute of	510-512	Friendly	584-586
Technology	443	Soil Conservation Authority	295-296
Rubber Goods	297-304	Soldier Settlement	299
Rural Finance Facilities	298-300, 634	Solicitor, Public	589
and Settlement Commission	314-317, 320-322	Stamp Duties	657-658
Holdings, Classification of	338	Standards Association of Australia	396
Rye	338	State Development and Regional	284-288
		Planning	446-451
		Electricity Commission	517-518
		Film Centre	458-459
		Library	304-310
		Rivers and Water Supply Com-	304-310
		mission	304-310
		Savings Bank of Victoria	301, 635, 691-694
		Statistical Districts, Land Occupied ..	320
		Stillbirths	173
		Stipendiary Magistrates	598
		Stock Breeding	353
		Mortgages	715
		Slaughtered	367
		Stock Exchange of Melbourne	717-721
		Streams	40-43
		Streets, Private, Construction of	233, 255-256
		and Roads, Length of	257
		Suicide	169
		Superannuation Fund, Common-	672
		wealth	671
		Parliamentary	669-670
		Police	667-668
		State	242-243
		Local Authorities	74, 595-596
		Supreme Court	46-47
		Survey and Mapping	734
		of Retail Establishments	192-194
		Surveys of Weekly Earnings and	192-194
		Hours	192-194

S

	Page		Page
T		V	
Tariffs	739	Value of Production	387-390
Tattersall Lotteries	659	Vascular Lesions	166
Taxation	652-666	Vegetables	351-352
Law, Commonwealth and State	590-594	Victoria, Books about	847-848
Teacher Training	481	Published in	849-853
Teachers' (Married Women) Pensions		Victoria Institute of Colleges	509-510
Fund	671-672	Victorian College of Pharmacy	514-515
Registration of	490	Pipelines Commission	445, 455-456
Teaching Service	478-479	Universities and Schools Exam-	
Technical Education	486-487	inations Board	496-498
Schools	477, 480	Vine Fruits	350-351
Telecommunications Commission	803-806	Vital Statistics	145-174
Telephone Offices	800		
Services	797-798, 802	W	
Television	469-472	Wage, Basic	179-184
Telex Facilities	797-798	Cases, 1964 to 1968	184-186
Tertiary Agricultural Education	311-312	Margins	187-188
Timber	369-371	Rates of	188-190
Titles of Land Issued	713	Rates, Weekly Minimum	189-190
Tobacco	342-346	and Salary Earners in Civilian	
Town and Country Planning		Employment	216-220
Planning	234-235, 618-619	Wages	179-193
Trade Agreements	270-271	Boards	176-178
Coastal	748-749	Boards Determinations	183-184
Commonwealth Department	of	War Pensions	577
with Countries	395-396	Service Homes	628
Interstate	744-747	Water Catchments	41
Legislation and Agreements for	736-740	Conservation	309-310
Missions	740	Consumption of, in Melbourne	
Overseas and Interstate	736-748	Supply Authorities	264-265
Recorded Value of Imports and		and Land Settlement	304-310
Exports	740-741	Waterworks Trusts and Sewerage	
Retail	727-733	Authorities	273-278
Trade Unions	201-203	Weather, Selected Victorian Towns	64-65
Trades Hall Councils	202-203	Summary for 1967	67-68
Trading Banks	683-685	Westernport, Port of	751, 761-762
Rural Advances	303	Wheat	328-329
Traffic Commission	784-786	Board, Australian	331-332
Training Centres, Youth	567	Breeding	333-334
Tramcars	430	for Grain	333
Tramways in Extra-Metropolitan		Standard	332
Cities	778	Varieties	334
and Omnibus Services	774-778	Wholesale Price Indexes	224-225
Transport	748-794	Widows' Pensions	554
Accidents	169	Wool Carding, Spinning, and	
Regulation Board	782-784	Weaving	436
Trust Funds and Special Accounts	672-673	Production of	363
Trustee Companies	710	Work Force	214-216
Public	708-710	Workers Compensation	210-212
Tuberculosis	523-524	Writs Received by the Sheriff	598
Tullamarine Airport	791-792		
U		X	
Unemployment Benefits	556-557	X-ray Surveys, Mass	523-524
Unions, Trade	201-203		
University, La Trobe	507-509	Y	
of Melbourne	498-502	Youth Welfare	566-567
Monash	502-506		





**1986 CENSUS
STATISTICAL DIVISIONS
OF
VICTORIA**



- REFERENCE**
- Statistical Division Boundary
 - Statistical Subdivision Boundary
 - Local Government Areas
 - Cities, Towns and Boroughs
 - Urban Centres
 - Major Urban Centres
 - Other Urban Centres
 - Major Railway
 - Other Railway
 - Other Localities
 - Unincorporated Areas
 - Kingston's Trail

1 Local Government Areas as at 30th June 1987
 2 Urban centres are concentrations of 1,000 persons or more, or higher population than 1,000 persons in other than the Statistical Division of Ballarat or other Statistic 2.8 for a similar concentration of other persons and in the 1986 Census
 3 Non-Sea coastlines
 4 See legend for regional and subdivision numbers on Local Government Areas



INDEX TO LOCAL GOVERNMENT AREAS

1 - East 2 - South 3 - West

NUMERICAL INDEX

ALPHABETICAL INDEX

WEST CENTRAL

GEORGETOWN S.	1
MELBOURNE S.	2
SOUTH BARRON S.	3
BURBANK S.	4
SEBILING CITY OF	5
NEWTOWN & CHISWELL CITY OF	6
OSBORN WEST CITY OF	7
OSWALD S.	8
BARNSBOROUGH S.	9
BARNSBOROUGH S.	10
BUNBURY S.	11
BALLA S.	12
BACCHUS MARSH S.	13
SEBINGH S.	14
OSWALD S.	15
NUMMER S. (PART)	16

NORTH CENTRAL

SEBINGH S.	17
NUMMER S. (PART)	18
FRALING S.	19
SEBINGH & WOODSIDE S.	20
FRITTON S.	21
SEBINGH & SEBINGH S.	22
CHERRICK S.	23
WARRINGBOROUGH CITY OF	24
MILLADPO S.	25
MALDEN S.	26
CARTLAMORE CITY OF	27
MELKAIDE S.	28
MURTON S.	29
SEBINGH S.	30
VA S.	31
NATHAN S.	32

EAST CENTRAL

HEARSTVILLE S. (PART)	33
UPPER MURRAY S.	34
BERNICE S. (PART)	35
GEORGETOWN S. (PART)	36
SEAS S.	37
FRILBY S.	38
NEWTOWN S.	39
MURUMBidgee S.	40

GIPPSLAND

MARRACRA S.	41
MOE CITY OF	42
YALLON WOODS AREA	43
CHILLON S.	44
MURTON S.	45
MURTON S.	46
COONA S.	47
YARRA S.	48
ALBERTON S.	49

FRANKLIN S.

FRANKLIN CITY OF	50
BERNICE S.	51
BALL CITY OF	52
BAVERA S.	53
AYON S.	54
BURBANK S.	55
BURBANK T.	56
ORRIST S.	57
YARRA S.	58

NORTH EASTERN

CHER S.	59
UPPER MURRAY S.	60
YORONG S.	61
ROBERT S.	62
YACKANDERRAH S.	63
WEDDING S.	64
ENGLTON S.	65
MURUMBIDGEE S.	66
WARRAGATTIA S.	67
WARRAGATTIA CITY OF	68
WEDDING S.	69
WARRAGATTIA S.	70
WARRAGATTIA S.	71
WARRAGATTIA S.	72
WARRAGATTIA S.	73
WARRAGATTIA S.	74
WARRAGATTIA S.	75
WARRAGATTIA S.	76
WARRAGATTIA S.	77
WARRAGATTIA S.	78
WARRAGATTIA S.	79
WARRAGATTIA S.	80
WARRAGATTIA S.	81
WARRAGATTIA S.	82
WARRAGATTIA S.	83
WARRAGATTIA S.	84
WARRAGATTIA S.	85
WARRAGATTIA S.	86
WARRAGATTIA S.	87
WARRAGATTIA S.	88
WARRAGATTIA S.	89
WARRAGATTIA S.	90
WARRAGATTIA S.	91
WARRAGATTIA S.	92
WARRAGATTIA S.	93
WARRAGATTIA S.	94
WARRAGATTIA S.	95
WARRAGATTIA S.	96
WARRAGATTIA S.	97
WARRAGATTIA S.	98
WARRAGATTIA S.	99
WARRAGATTIA S.	100

NORTHERN

SEBINGH S.	101
SEBINGH CITY OF	102
FORBES S.	103
YACKANDERRAH S.	104
COORAN S.	105
MURUMBIDGEE S.	106
NATHAN S.	107
YARRAM S.	108
ROSEY S.	109
OSWALD S.	110
WARRAGATTIA S.	111
SEAS S.	112
FRILBY S.	113
FRILBY S.	114
FRILBY S.	115
FRILBY S.	116
FRILBY S.	117
FRILBY S.	118
FRILBY S.	119
FRILBY S.	120
FRILBY S.	121
FRILBY S.	122
FRILBY S.	123
FRILBY S.	124
FRILBY S.	125
FRILBY S.	126
FRILBY S.	127
FRILBY S.	128
FRILBY S.	129
FRILBY S.	130
FRILBY S.	131
FRILBY S.	132
FRILBY S.	133
FRILBY S.	134
FRILBY S.	135
FRILBY S.	136
FRILBY S.	137
FRILBY S.	138
FRILBY S.	139
FRILBY S.	140
FRILBY S.	141
FRILBY S.	142
FRILBY S.	143
FRILBY S.	144
FRILBY S.	145
FRILBY S.	146
FRILBY S.	147
FRILBY S.	148
FRILBY S.	149
FRILBY S.	150

MALLEE

SWAN HILL CITY OF	151
SWAN HILL S.	152
WILDRIP CITY OF	153
WILDRIP S.	154
WALPUP S.	155
KARRADINE S.	156
WYNDHAM S.	157
BRADY S.	158

WIMMERA

CONRAD S.	159
WARRAGATTIA S.	160
WARRAGATTIA S.	161
WARRAGATTIA S.	162
KARLA S.	163
WARRAGATTIA S.	164
WARRAGATTIA S.	165
WARRAGATTIA S.	166
WARRAGATTIA S.	167
WARRAGATTIA S.	168
WARRAGATTIA S.	169
WARRAGATTIA S.	170
WARRAGATTIA S.	171
WARRAGATTIA S.	172
WARRAGATTIA S.	173
WARRAGATTIA S.	174
WARRAGATTIA S.	175
WARRAGATTIA S.	176
WARRAGATTIA S.	177
WARRAGATTIA S.	178
WARRAGATTIA S.	179
WARRAGATTIA S.	180
WARRAGATTIA S.	181
WARRAGATTIA S.	182
WARRAGATTIA S.	183
WARRAGATTIA S.	184
WARRAGATTIA S.	185
WARRAGATTIA S.	186
WARRAGATTIA S.	187
WARRAGATTIA S.	188
WARRAGATTIA S.	189
WARRAGATTIA S.	190
WARRAGATTIA S.	191
WARRAGATTIA S.	192
WARRAGATTIA S.	193
WARRAGATTIA S.	194
WARRAGATTIA S.	195
WARRAGATTIA S.	196
WARRAGATTIA S.	197
WARRAGATTIA S.	198
WARRAGATTIA S.	199
WARRAGATTIA S.	200

WESTERN

LETON S.	201
SULLIVAN S.	202
SULLIVAN CITY OF	203
SULLIVAN S.	204
SEBINGH S.	205
SEBINGH S.	206
SEBINGH S.	207
SEBINGH S.	208
SEBINGH S.	209
SEBINGH S.	210
SEBINGH S.	211
SEBINGH S.	212
SEBINGH S.	213
SEBINGH S.	214
SEBINGH S.	215
SEBINGH S.	216
SEBINGH S.	217
SEBINGH S.	218
SEBINGH S.	219
SEBINGH S.	220
SEBINGH S.	221
SEBINGH S.	222
SEBINGH S.	223
SEBINGH S.	224
SEBINGH S.	225
SEBINGH S.	226
SEBINGH S.	227
SEBINGH S.	228
SEBINGH S.	229
SEBINGH S.	230
SEBINGH S.	231
SEBINGH S.	232
SEBINGH S.	233
SEBINGH S.	234
SEBINGH S.	235
SEBINGH S.	236
SEBINGH S.	237
SEBINGH S.	238
SEBINGH S.	239
SEBINGH S.	240
SEBINGH S.	241
SEBINGH S.	242
SEBINGH S.	243
SEBINGH S.	244
SEBINGH S.	245
SEBINGH S.	246
SEBINGH S.	247
SEBINGH S.	248
SEBINGH S.	249
SEBINGH S.	250

ALBERTON S.

ALBERTON S.	251
ALBERTON S.	252
ALBERTON S.	253
ALBERTON S.	254
ALBERTON S.	255
ALBERTON S.	256
ALBERTON S.	257
ALBERTON S.	258
ALBERTON S.	259
ALBERTON S.	260
ALBERTON S.	261
ALBERTON S.	262
ALBERTON S.	263
ALBERTON S.	264
ALBERTON S.	265
ALBERTON S.	266
ALBERTON S.	267
ALBERTON S.	268
ALBERTON S.	269
ALBERTON S.	270
ALBERTON S.	271
ALBERTON S.	272
ALBERTON S.	273
ALBERTON S.	274
ALBERTON S.	275
ALBERTON S.	276
ALBERTON S.	277
ALBERTON S.	278
ALBERTON S.	279
ALBERTON S.	280
ALBERTON S.	281
ALBERTON S.	282
ALBERTON S.	283
ALBERTON S.	284
ALBERTON S.	285
ALBERTON S.	286
ALBERTON S.	287
ALBERTON S.	288
ALBERTON S.	289
ALBERTON S.	290
ALBERTON S.	291
ALBERTON S.	292
ALBERTON S.	293
ALBERTON S.	294
ALBERTON S.	295
ALBERTON S.	296
ALBERTON S.	297
ALBERTON S.	298
ALBERTON S.	299
ALBERTON S.	300

BARRACLOUGH S.

BARRACLOUGH S.	301
BARRACLOUGH S.	302
BARRACLOUGH S.	303
BARRACLOUGH S.	304
BARRACLOUGH S.	305
BARRACLOUGH S.	306
BARRACLOUGH S.	307
BARRACLOUGH S.	308
BARRACLOUGH S.	309
BARRACLOUGH S.	310
BARRACLOUGH S.	311
BARRACLOUGH S.	312
BARRACLOUGH S.	313
BARRACLOUGH S.	314
BARRACLOUGH S.	315
BARRACLOUGH S.	316
BARRACLOUGH S.	317
BARRACLOUGH S.	318
BARRACLOUGH S.	319
BARRACLOUGH S.	320
BARRACLOUGH S.	321
BARRACLOUGH S.	322
BARRACLOUGH S.	323
BARRACLOUGH S.	324
BARRACLOUGH S.	325
BARRACLOUGH S.	326
BARRACLOUGH S.	327
BARRACLOUGH S.	328
BARRACLOUGH S.	329
BARRACLOUGH S.	330
BARRACLOUGH S.	331
BARRACLOUGH S.	332
BARRACLOUGH S.	333
BARRACLOUGH S.	334
BARRACLOUGH S.	335
BARRACLOUGH S.	336
BARRACLOUGH S.	337
BARRACLOUGH S.	338
BARRACLOUGH S.	339
BARRACLOUGH S.	340
BARRACLOUGH S.	341
BARRACLOUGH S.	342
BARRACLOUGH S.	343
BARRACLOUGH S.	344
BARRACLOUGH S.	345
BARRACLOUGH S.	346
BARRACLOUGH S.	347
BARRACLOUGH S.	348
BARRACLOUGH S.	349
BARRACLOUGH S.	350

CAMERON S.

CAMERON S.	351
CAMERON S.	352
CAMERON S.	353
CAMERON S.	354
CAMERON S.	355
CAMERON S.	356
CAMERON S.	357
CAMERON S.	358
CAMERON S.	359
CAMERON S.	360
CAMERON S.	361
CAMERON S.	362
CAMERON S.	363
CAMERON S.	364
CAMERON S.	365
CAMERON S.	366
CAMERON S.	367
CAMERON S.	368
CAMERON S.	369
CAMERON S.	370
CAMERON S.	371
CAMERON S.	372
CAMERON S.	373
CAMERON S.	374
CAMERON S.	375
CAMERON S.	376
CAMERON S.	377
CAMERON S.	378
CAMERON S.	379
CAMERON S.	380
CAMERON S.	381
CAMERON S.	382
CAMERON S.	383
CAMERON S.	384
CAMERON S.	385
CAMERON S.	386
CAMERON S.	387
CAMERON S.	388
CAMERON S.	389
CAMERON S.	390
CAMERON S.	391
CAMERON S.	392
CAMERON S.	393
CAMERON S.	394
CAMERON S.	395
CAMERON S.	396
CAMERON S.	397
CAMERON S.	398
CAMERON S.	399
CAMERON S.	400

CHAMBERLAIN S.

CHAMBERLAIN S.	401
CHAMBERLAIN S.	402
CHAMBERLAIN S.	403
CHAMBERLAIN S.	404
CHAMBERLAIN S.	405
CHAMBERLAIN S.	406
CHAMBERLAIN S.	407
CHAMBERLAIN S.	408
CHAMBERLAIN S.	409
CHAMBERLAIN S.	410
CHAMBERLAIN S.	411
CHAMBERLAIN S.	412
CHAMBERLAIN S.	413
CHAMBERLAIN S.	414
CHAMBERLAIN S.	415
CHAMBERLAIN S.	416
CHAMBERLAIN S.	417
CHAMBERLAIN S.	418
CHAMBERLAIN S.	419
CHAMBERLAIN S.	420
CHAMBERLAIN S.	421
CHAMBERLAIN S.	422
CHAMBERLAIN S.	423
CHAMBERLAIN S.	424
CHAMBERLAIN S.	425
CHAMBERLAIN S.	426
CHAMBERLAIN S.	427
CHAMBERLAIN S.	428
CHAMBERLAIN S.	429
CHAMBERLAIN S.	430
CHAMBERLAIN S.	431
CHAMBERLAIN S.	432
CHAMBERLAIN S.	433
CHAMBERLAIN S.	434
CHAMBERLAIN S.	435
CHAMBERLAIN S.	436
CHAMBERLAIN S.	437
CHAMBERLAIN S.	438
CHAMBERLAIN S.	439
CHAMBERLAIN S.	440
CHAMBERLAIN S.	441
CHAMBERLAIN S.	442
CHAMBERLAIN S.	443
CHAMBERLAIN S.	444
CHAMBERLAIN S.	445
CHAMBERLAIN S.	446
CHAMBERLAIN S.	447
CHAMBERLAIN S.	448
CHAMBERLAIN S.	449
CHAMBERLAIN S.	450

CHAMBERLAIN S.

CHAMBERLAIN S.	451
CHAMBERLAIN S.	452
CHAMBERLAIN S.	453
CHAMBERLAIN S.	454
CHAMBERLAIN S.	455
CHAMBERLAIN S.	456
CHAMBERLAIN S.	457
CHAMBERLAIN S.	458
CHAMBERLAIN S.	459
CHAMBERLAIN S.	460
CHAMBERLAIN S.	461
CHAMBERLAIN S.	462
CHAMBERLAIN S.	463
CHAMBERLAIN S.	464
CHAMBERLAIN S.	465
CHAMBERLAIN S.	466
CHAMBERLAIN S.	467
CHAMBERLAIN S.	468
CHAMBERLAIN S.	469
CHAMBERLAIN S.	470
CHAMBERLAIN S.	471
CHAMBERLAIN S.	472
CHAMBERLAIN S.	473
CHAMBERLAIN S.	474
CHAMBERLAIN S.	4